



Mark 900 Series Handheld XRF Alloy Analyzer

Focused | Professional | Innovative



Mark 900 Series

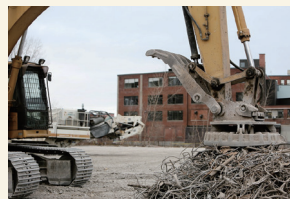
— A Metal Lab in Your Hand

Since the introduction of XRF spectrometry decades ago, it is a proven and popular technique for metal analysis and widely used as an efficient tool for quality control in many metal process facilities considering its mobility for testing task everywhere and anytime and easy to use and maintain.



Typical Applications

Applications are not limited to solid but can also measure liquids and powders. Mark900 series handheld alloy analyzers are widely used for alloy grade identification and quality control, scrap metal recycling, precious metals, PMI and so on.



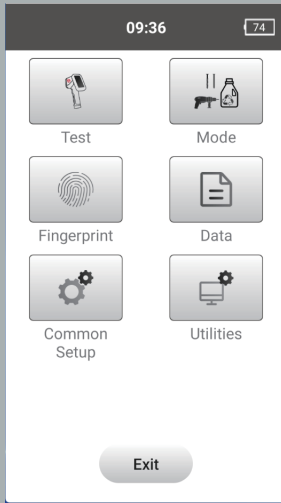
Napco Mark900 series are good choice for metal analysis in many fields, delivering rapid, accurate results right in your hand. Due to the advanced electronics and state-of-the-art mathematical algorithms, Mark900 series provide ultimate quality of measurement within a couple of seconds, which makes it the ideal solution for check-ing and analyzing incoming material, finished goods and in process production parts with a non destructive way. With operating simplicity, you can view the alloy grade and chemistry on the touch screen display with just a few seconds to obtain lab-quality chemistry, requiring minimal training and little or no sample preparation for all shape and size of sample.



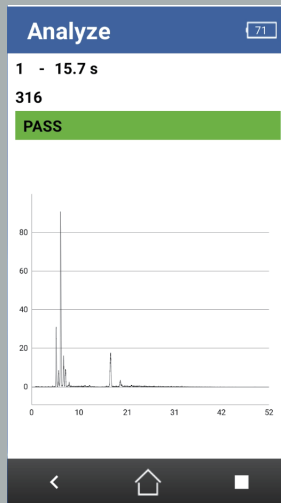
Models of Napco Mark 900 Series



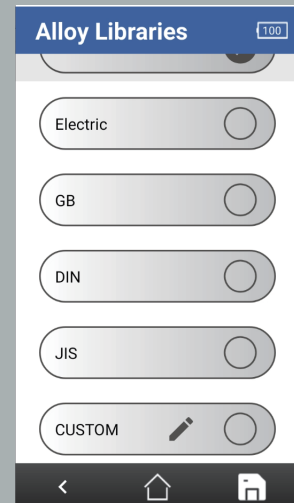
Model	Mark 900	Mark 900P	Mark 900S
Excitation	Ceramic packaged microfocus X-ray tube, Ag Anode 50kV		
Detector	High performance Si-Pin detector	Optimized SDD detector (with Graphene window)	Optimized SDD detector (with Graphene window)
Resolution	140eV FWHM	129eV FWHM	129eV FWHM
Filter	Multi position automatic filter changer		
Window	Kapton with anti-puncture window design optional		
Battery	7.2V Li-ion battery, 6800mAh		
Display	Capacitive touch screen (5 inch 720P)		
CPU	i.MX 8M Mini quad core 1.8GHz		
Signal Processor	4096-pixel multi-channel detector/80 MHz ADC digital signal processor		
Data Storage	Over 100,000 data storage		
Data transfer	WiFi, USB		
Structure design	Unique structure design, effectively increase the heat dissipation of the X ray tube		
Radiation safety	Safety Guard induction device, when there is no sample in the test area, the source will shut, providing maximum safety protection. Password-protected user security		
Camera (optional)	Integrated CCD camera with autofocus lens for positioning and recording measuring point positions		
Elements	Sb, Sn, Ag, Pd, Al, Mo, Nb, Zr, Bi, Pb, Se, W, Zn, Cu, Re, Ta, Hf, Ni, Co, Fe, Mn, Cr, V, Ti	Sb, Sn, Ag, Pd, Al, Mo, Nb, Zr, Bi, Pb, Se, W, Zn, Cu, Re, Ta, Hf, Ni, Co, Fe, Mn, Cr, V, Ti	Sb, Sn, Ag, Pd, Al, Mo, Nb, Zr, Bi, Pb, Se, W, Zn, Cu, Re, Ta, Hf, Ni, Co, Fe, Mn, Cr, V, Ti, Mg, Si, P, S
Environment	Temp: -10°C~50°C Humidity 0%~80%		
Weight	Approx. 1.5kg (3.3lbs) including battery		
Dimensions	L x W x H: 220mm*91mm*276mm		
Optional	With the innovatively designed NAPCO mobile application, data can be viewed, shared, and printed in real time, and functions such as sample photo, GPS positioning, barcode scanning, and data archiving can be supported. Optional data cloud service function support uploading the test results to a secure and encrypted cloud server, and perform efficient statistics, query and analysis of large-scale analysis data.		
Special Accessories	In addition to conventional accessories, optional: welding mask, hot surface adapter. It can detect high temperature surfaces and vibrating surfaces without contact.		



Simple and easy-to-use software interface



Fingerprint with efficient Pass/Fail function



Powerful grade library with custom function

Useful Accessories Options

NAPCO Mark900 series handheld alloy analyzers can be equipped with uniquely designed bench-top test stand, portable test stand, etc., which can greatly simplify the customer's test work; carbon fiber puncture-proof windows can be quickly replaced to avoid detector damage.



Bench-top Test Stand

Allows hands-free measurement of samples. Completely shielded to protect the operator from any scattered radiation.



Portable Test Stand,

Folds up for easy transport and portability. Allows hands-free measurement of samples. Completely shielded to protect the operator from any scattered radiation.



Backscatter Shield

A flexible and robust shield attaches to the analyzer's cone, protecting the operator from any backscattered x ray during analysis.



Carbon Fiber Anti-Puncture Window

Carbon fiber anti-puncture windows can be used to effectively protect the window film from damage by irregular samples testing.





About Napco

Napco is a high-tech manufacturer focusing on the development and application of X-ray technology products. It is committed to becoming a world-class supplier of X-ray industrial inspection solutions. We keep serving customers in the fields of machinery manufacturing, metal processing, aerospace, petrochemical, mining and geology, food safety, environmental protection, scientific research and etc.

Napco keeps improving product performance and user experience with R&D advantages and innovative designs, and continues to provide global users with reliable X-ray measure solutions to solve various challenges from routine testing tasks to complex customized measure requirements.

Napco Precision Instruments Co.,Ltd.

401, Fucheng Digital Science Park, Fucheng Street, Longhua District, Shenzhen, China

TEL: + 86 138 2887 9531

EMAIL: sales@napcolab.com

WEB: <https://www.napcolab.com>